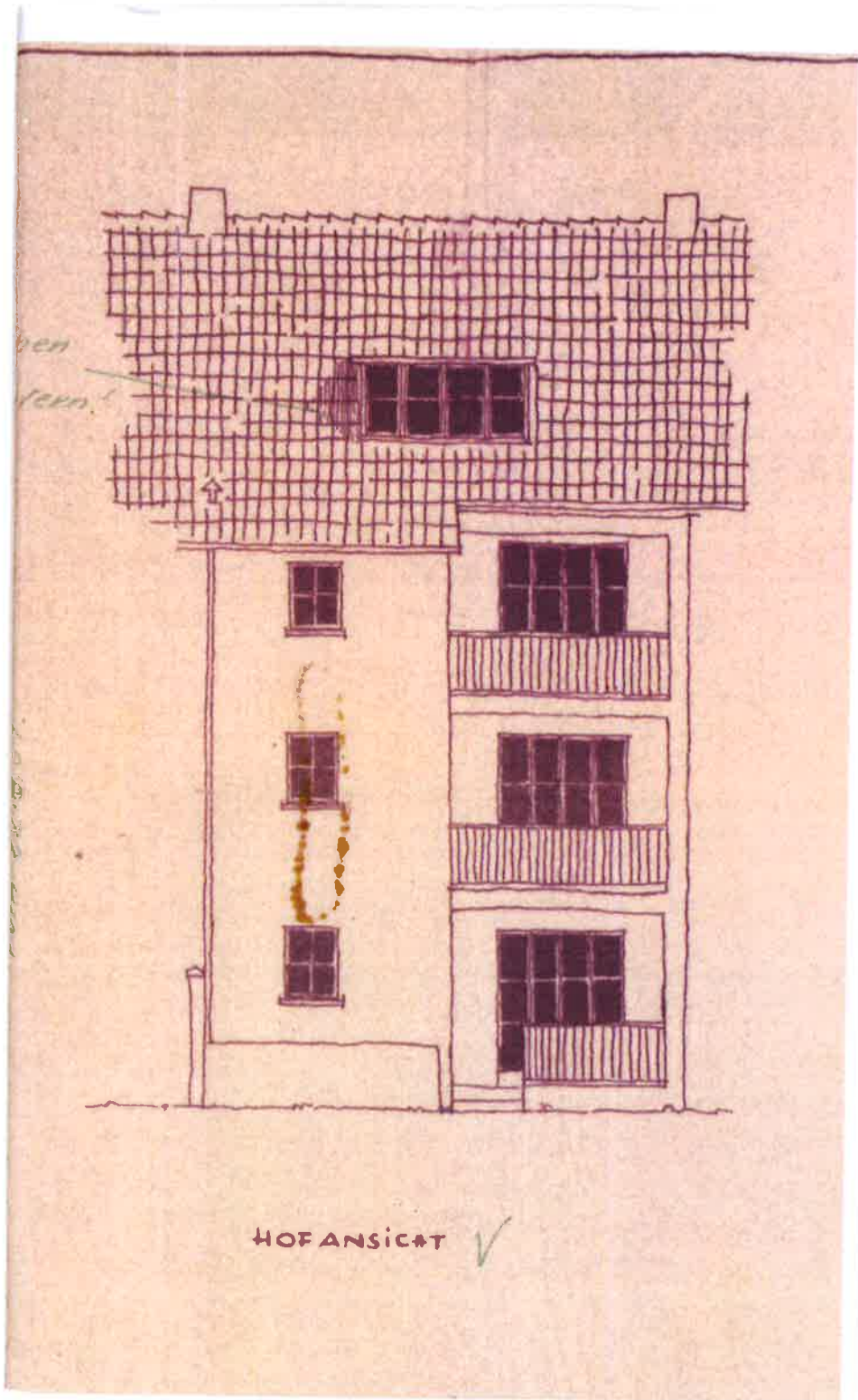


dachhäuschen
verrentern!

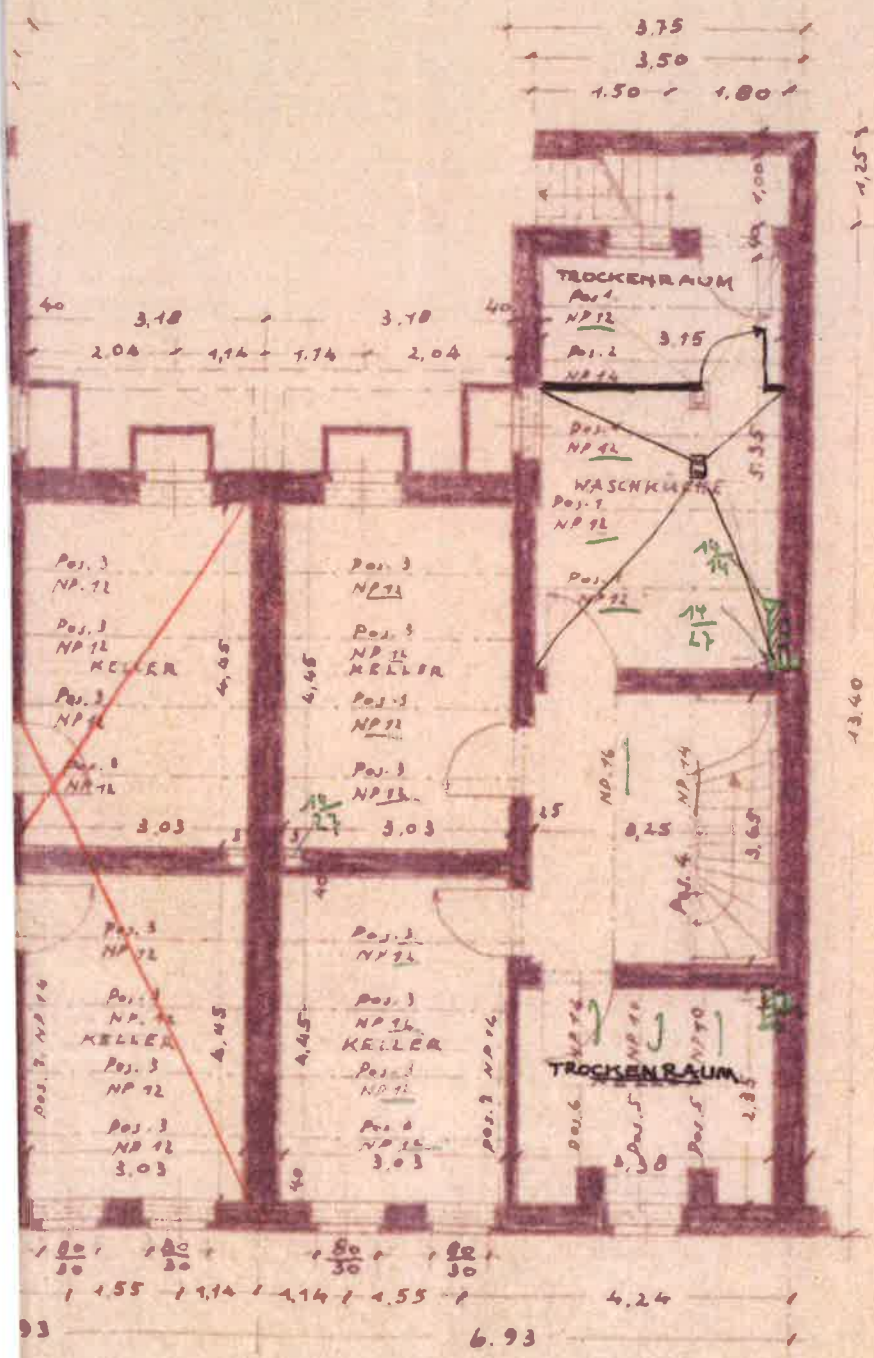


genehmigt durch
Baurevier - Nr. 559651
vom 22.8.57

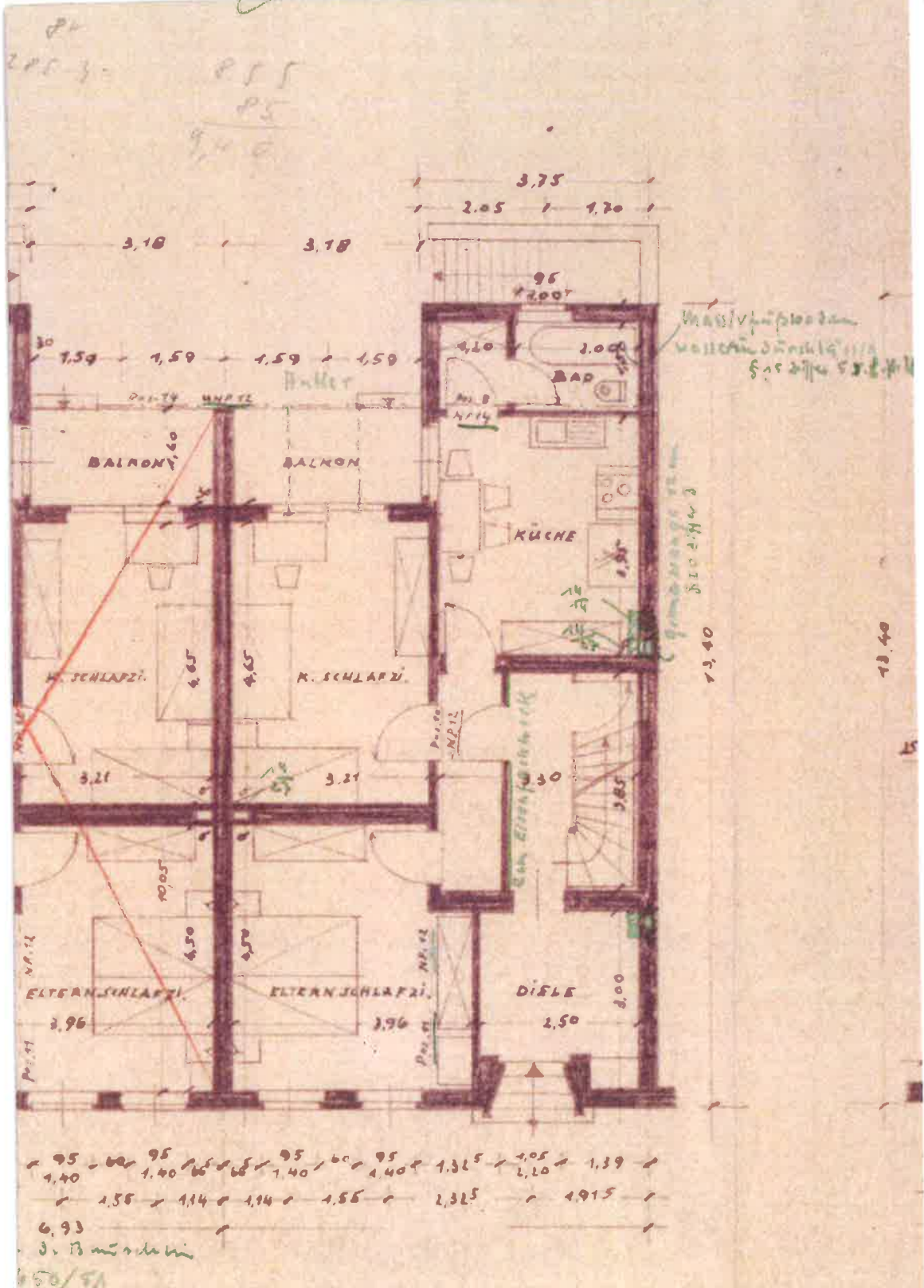
STRASSENANSICHT ✓



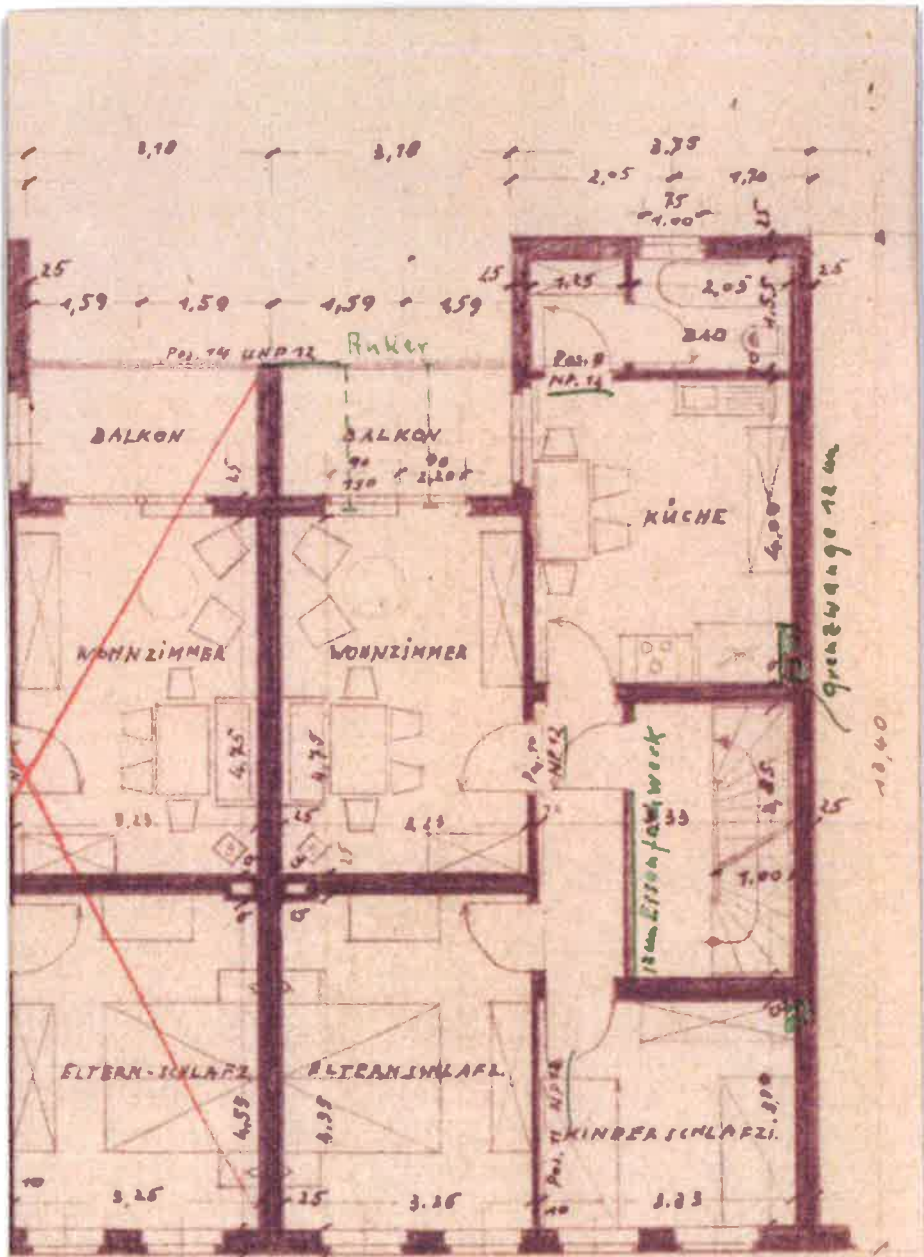
HOFANSICHT ✓



KELLERGESCHOSS

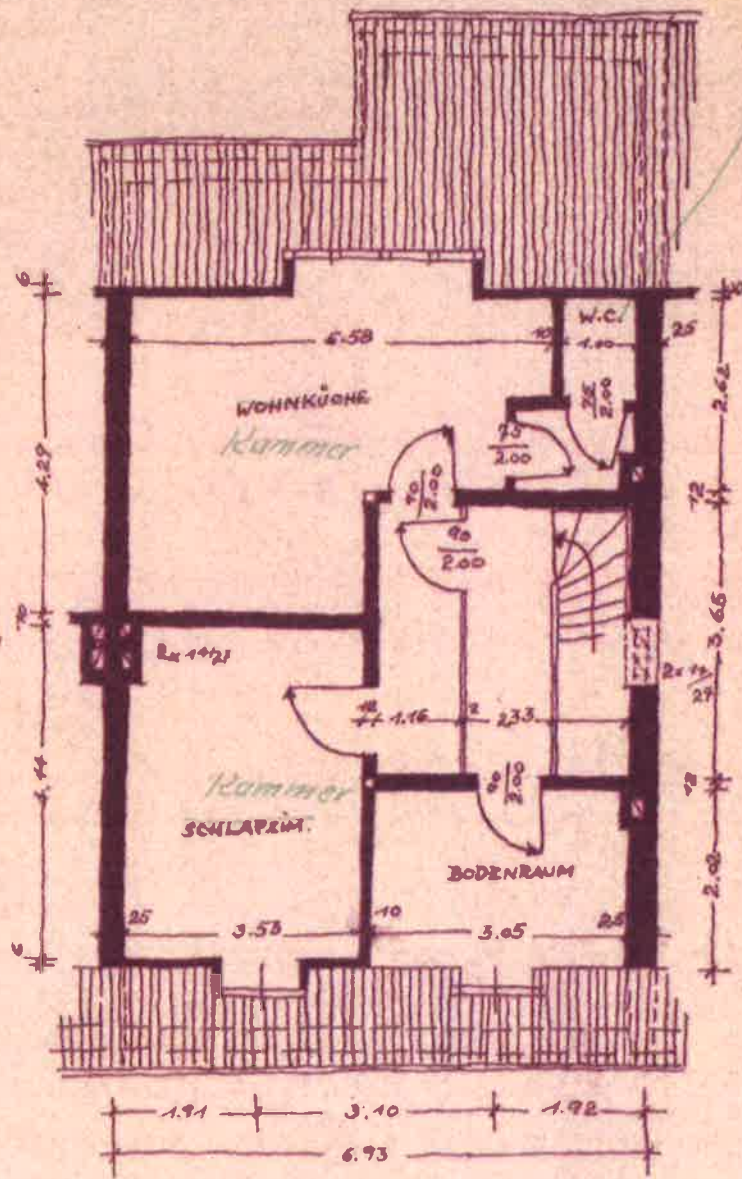


IRDGESCHOSS



100 95 = 60 95 = 66 66 = 95 60 95 = 60 95 = 60 95 = 60 95 = 60
 7.40 1.40 1.40 1.40 1.40 1.40 1.40 1.40 1.40
 55 = 1.55 = 1.14 = 1.14 = 1.55 = 1.55 = 1.55 = 1.24
 .93 / 6.93

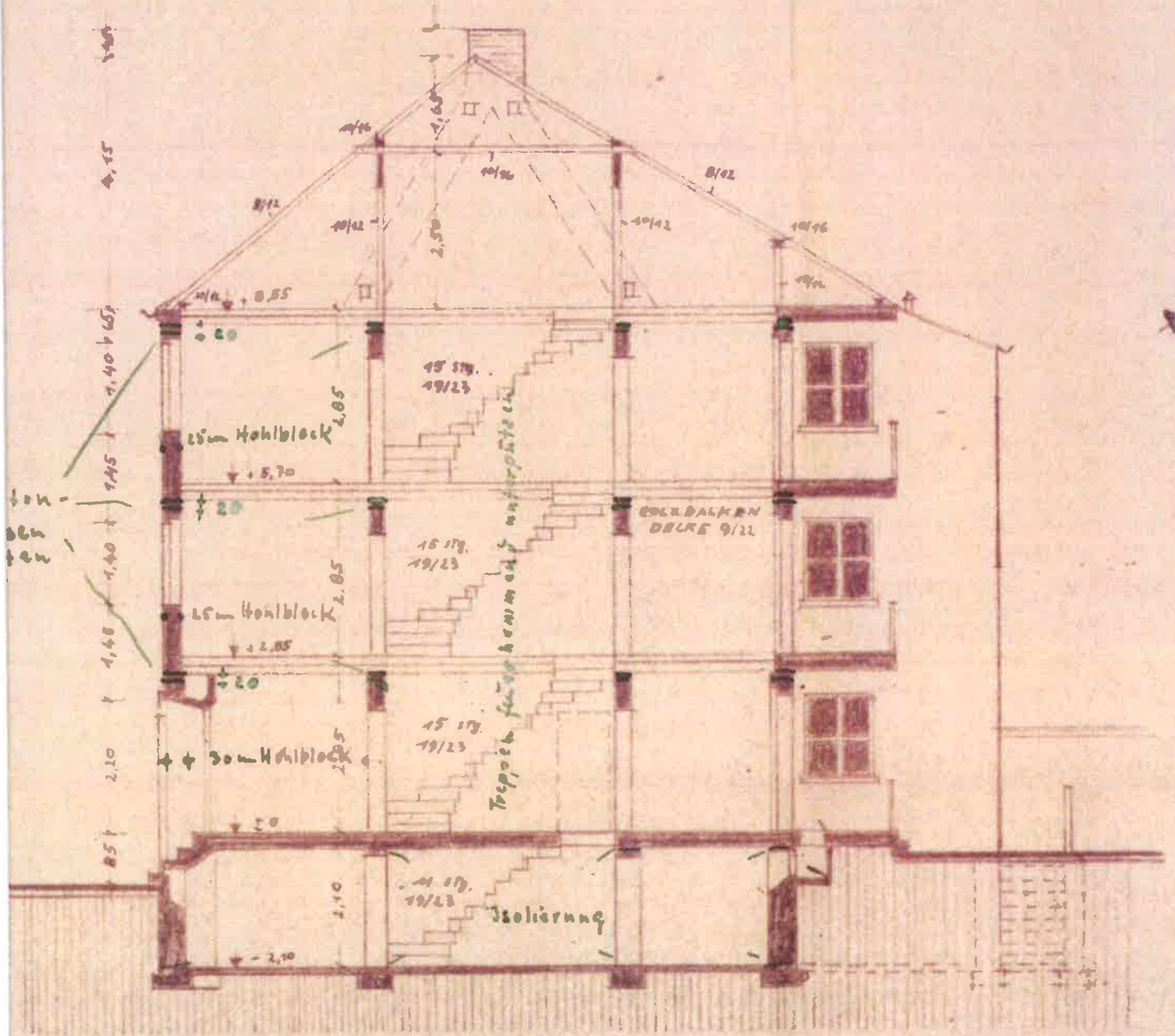
1. u. 2. OBERGESCHOSS



liegendes Dachtesteinsandstein

DACHGESCHOSS

GLADBACHER-AKTIEN-BAU



SCHNITT

1.75 2.10 2.10 2.75
 2.05 2.05 1.70